

**KALDEWEI**

Europe's No. 1 for baths

**BATHS. SHOWERS.  
WHIRLNESS.**

Pure pleasure with Kaldewei steel enamel 3.5 mm.





## WHAT RESULTS WHEN PRECISION MEETS INSPIRATION? A GENUINE KALDEWEI BATH.

Franz-Dieter Kaldewei

Franz Kaldewei founded the business in 1918. With committed employees and entrepreneurial boldness, the company continued to grow and flourish over several generations, becoming today Europe's largest manufacturer of steel enamel baths and shower trays. We at Kaldewei do our utmost to develop and manufacture products of superior quality and to continuously improve them using the latest technical innovations. That's why we use Kaldewei steel enamel 3.5 mm for our baths and shower trays – a one-of-a-kind material that has been valued by millions of customers both in Germany and abroad for decades.

## CONTENT

<b>THE QUALITY</b> .....	Page 4
<b>THE DESIGN</b> .....	Page 5
<b>THE KALDEWEI BATH WORLDS</b> .....	Page 6
<b>THE AVANTGARDE PROGRAMME</b>	
<b>BATHS</b> .....	Page 8
<b>SHOWERS</b> .....	Page 16
<b>THE AMBIENTE PROGRAMME</b>	
<b>BATHS</b> .....	Page 20
<b>SHOWERS</b> .....	Page 30
<b>THE ADVANTAGE PROGRAMME</b>	
<b>BATHS</b> .....	Page 34
<b>SHOWERS</b> .....	Page 36
<b>THE WHIRLPOOL SYSTEMS</b> .....	
	Page 38
<b>COLOURS AND EXTRAS</b> .....	
	Page 40
<b>HANDLES AND ANTI-SLIP</b> .....	
	Page 46

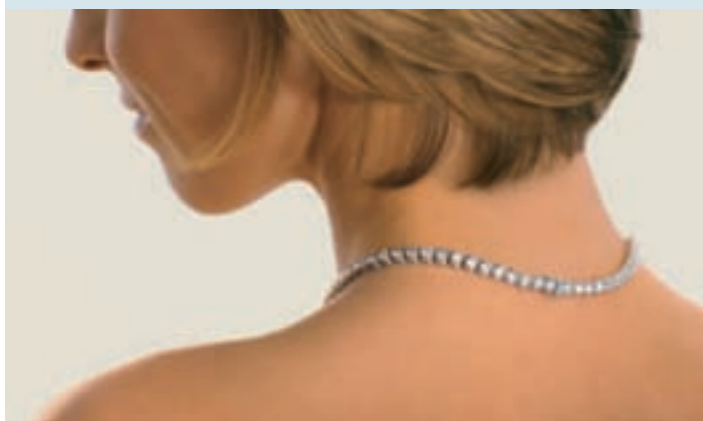


## KALDEWEI STEEL ENAMEL ALWAYS FEELS EXCLUSIVE.

And that feeling is no coincidence. Because Kaldewei is the only manufacturer to develop and produce its own special enamel. We use only natural, recyclable materials in our products: steel and enamel. The enamel layer is fired for permanence at a temperature of more than 800°C in the world's largest U-type enamelling furnaces. Constant monitoring of production and ongoing refinements in technique ensure a high-quality, long-lasting product made of Kaldewei steel enamel 3.5 mm. This exclusive material offers ideal properties for the world of bathing: clean and hygienic, acid and impact-resistant, scratchproof and hard-wearing. And so stable and long-lasting that it comes with a 30-year guarantee.

Even the unique qualities of baths and shower trays made of Kaldewei steel enamel 3.5 mm can be enhanced further: with the easy-clean finish that is permanently burnt onto the Kaldewei steel enamel 3.5 mm. With this advanced finish, water forms beads and rolls off the surface of the bath, taking virtually all dirt and lime particles with it. The result is something to see: a bath that always looks like new, with very little effort. The easy-clean finish – for an easy-care, lastingly lovely bath.

**The easy-clean finish. With a 30-year guarantee.**



## “PRODUCTS SHOULD NOT BE MERELY USEFUL. THEY SHOULD HAVE A TOUCH OF MAGIC.”

Ettore Sottsass

The days when bathrooms were viewed as purely functional are long over. Today, the bathroom is somewhere people want to feel comfortable and to express their personality – in an atmosphere designed to suit their own needs and aesthetic desires. To help people create a beautiful bathroom that's all their own, every Kaldewei bath and shower tray is conceived by one of a series of internationally acclaimed design studios. These include Sottsass Associati, Milan; Phoenix Design, Stuttgart/Tokyo; Frog Design; Kurz Kurz Design and Jochen Flacke Design. This has proven to be an excellent decision, as evidenced by the many design awards we have received.

reddot Award for high design quality, conferred by the Design Centre of North Rhine-Westphalia, Essen



Design Plus Sanitär Heizung Klima, awarded by the Frankfurt Trade Fair GmbH



iF Product Design Award, awarded by IndustrieForum Hanover



International Design Award Baden-Württemberg



iF design award CHINA, awarded by IndustrieForum Hanover



Nominated for the 2006 Design Prize of the Federal Republic of Germany



DP3D – The German award for 3-dimensionality



Good Design, conferred by The Chicago Athenaeum: Museum of Architecture and Design



### Index:

The names in the tables on the following pages stand for the corresponding design studios.

Flacke = Jochen Flacke Design

Sottsass = Sottsass Associati

Kurz = Kurz Kurz Design

Phoenix = Phoenix Design

Frog = Frog Design

Kaldewei = Designed by Kaldewei

## WHICH BATH WORLD IS THE ONE FOR YOU?

Because every bathroom is unique, we offer more than 250 different baths, whirlpool baths and shower trays to choose from, in a wide variety of shapes, colours and sizes. To help you find just the right bath or shower to suit your own taste and functional requirements, we have divided our product line into three different Kaldewei bath worlds: Avantgarde, Ambiente and Advantage.

## AMBIENTE

The impact of a picture cannot be traced to a single colour. That's why our Ambiente collection offers you an unusually rich palette of possibilities for bringing more extravagance and beauty to your bath. No matter which model you choose, your bath will always have its own special radiance.



## AVANTGARDE

The avantgarde aesthetic places emphasis on elegance, combining superior materials with forward-looking design. Our Avantgarde collection is conceived to suit the most discriminating taste. Let our sophisticated solutions inspire you to lend your bath your own personal signature.

## ADVANTAGE

If you have children, you know that three things are important when it comes to bathroom fixtures: high quality, functional design and long life. The baths and shower trays in our Advantage collection offer you all this and even more: an appealing look based on the perfect harmony of form and function.



**GOOD DESIGN IS AN EXPRESSION OF PERSONAL STYLE.**



**MEGA DUO OVAL**

With two identically formed backrests, a central waste and broad armrests on both sides, the MEGA DUO OVAL offers the ultimate in bathing comfort for two. It is also available with an optional one-piece moulded panel.



**MEGA DUO**

The MEGA DUO is too good not to share. Thanks to its classic rectangular form and generous volume, bathing together is always a pleasure.



**MEGA DUO 6**

For those who are looking for a corner solution but don't want to do without the striking design offered by this model range, we've developed the hexagonal MEGA DUO 6.



**KUSATSU POOL**

With the KUSATSU POOL, based on Japanese bathing culture, revitalising energy comes from the deep. Thanks to its unusual depth of 81 cm, you can submerge your entire upper body under the water in this luxurious pool.



**PUNTA DUO 3**

As a creative corner solution, the PUNTA DUO 3 offers a generous interior equipped with an armrest that doubles as a seat, as well as a shelf placed on the side to allow for versatile bathing positions.

	Model No.	Length (cm)	Width (cm)	Depth (cm)	Side section length (cm)	Volume in litres*	Weight (kg) ▲	Anti-slip	Full anti-slip	Easy-clean finish	Accessories	Support for tiling	Panel	VIVO TURBO	VIVO TURBO PLUS	VIVO VITA	VIVO AQUA ECO	VIVO AQUA	VIVO VARIO ECO	VIVO VARIO PLUS	Designer
MEGA DUO OVAL	184	180	90	45		186	55	•	•	•	C		M	•	•	•	•	•	•	•	Sottsass
	184-7	180	90	45		186		•	•	•	C		x			•					Sott./Phoe.
MEGA DUO	180	180	90	45		186	60	•	•	•	C		M	•	•	•	•	•	•	•	Sottsass
MEGA DUO 6	182	214	90	45	152.7	186	60			•	C		M	•	•	•	•	•	•	•	Sottsass
KUSATSU POOL	177	140	100	81		435	79			•	S			•	•						Sottsass
PUNTA DUO 3	910	196.6	150.2	45	140	223	62			•	C	•	•	•	•	•	•	•	•	•	Phoenix

\* water capacity less average 70-litre displacement  
▲ weight of the enamelled bath

x = standard feature  
• = for an additional charge

\* = for mounting handles, available at extra charge  
C = COMFORT-LEVEL/COMFORT-LEVEL PLUS  
I = indirect lighting

M = MULTIVERSO panelling system for whirl baths  
O = decoration  
S = waterfall bath inlet

SHARED ENJOYMENT IS DOUBLE THE FUN.



**PLAZA DUO**

The PLAZA DUO double bath with its generous proportions, soft inner contours and form that tapers toward the foot end is the ideal place to share a relaxing bath with someone special.



**CONODUO**

The CONODUO features standout design and an ergonomic form – for bathing in comfort and style. And the CONODUO bath can be combined with the CONOPLAN shower tray for an integrated design concept in the bathroom. It is also available with an optional one-piece moulded panel.



**ELLIPSO DUO OVAL**

What more spacious and inviting place to enjoy bathing than ELLIPSO DUO OVAL? The elliptical interior form is echoed outside, conveying a feeling of luxury and extravagance.



**ELLIPSO DUO**

This bath combines luxury with an extravagant formal language. The rounded shoulder section and carefully calibrated side walls mean there's plenty of room to lean back and relax, either alone or together.



	Model No.	Length (cm)	Width (cm)	Depth (cm)	Side section length (cm)	Volume in litres <sup>°</sup>	Weight (kg) <sup>▲</sup>	Anti-slip	Full anti-slip	Easy-clean finish	Accessories	Support for tiling	Panel	VIVO TURBO	VIVO TURBO PLUS	VIVO VITA	VIVO AQUA ECO	VIVO AQUA	VIVO VARIO ECO	VIVO VARIO PLUS	Designer
PLAZA DUO right	190	180	120/80	43		273	67	•	•	•	COS			•	•	•	•	•	•	•	Phoenix
PLAZA DUO left	192	180	120/80	43		273	67	•	•	•	COS			•	•	•	•	•	•	•	Phoenix
CONODUO	732	170	75	43		122	52	•	•	•	CIOS		M	•	•	•	•	•	•	•	Sottsass
	733	180	80	43		159	57	•	•	•	CIOS		M	•	•	•	•	•	•	•	Sottsass
	733-7	180	80	43		159		•	•	•	CIOS		x			•					Sottsass
	734	190	90	43		220	66	•	•	•	CIOS		M	•	•	•	•	•	•	•	Sottsass
	734-7	190	90	43		220		•	•	•	CIOS		x			•					Sottsass
	735	200	100	43		260	75	•	•	•	CIOS		M	•	•	•	•	•	•	•	Sottsass
	735-7	200	100	43		260		•	•	•	CIOS		x			•					Sottsass
ELLIPSO DUO OVAL	232	190	100	45		214	55	•	•	•	C		M				•				Phoenix
	232-7	190	100	45		214		•	•	•	C		x				•				Phoenix
ELLIPSO DUO	230	190	100	45		214	59	•	•	•	C		M	•	•		•	•			Phoenix

<sup>°</sup> water capacity less average 70-litre displacement  
<sup>▲</sup> weight of the enamelled bath

x = standard feature  
 • = for an additional charge

\* = for mounting handles, available at extra charge  
 C = COMFORT-LEVEL/COMFORT-LEVEL PLUS  
 I = indirect lighting

M = MULTIVERSO panelling system for whirl baths  
 O = decoration  
 S = waterfall bath inlet

**ELEGANCE HAS MANY FORMS.**



**CENTRO DUO OVAL**

If you appreciate purist simplicity and streamlined elegance, you will feel especially at home in the CENTRO DUO OVAL bath. With two identical backrests and centrally placed waste, it's also the right bath for two to enjoy comfortably.



**CENTRO DUO 2**

The CENTRO DUO 2 with two rounded corners looks simply elegant on any wall.



**CENTRO DUO 1 right and left**

The CENTRO DUO 1 has a rounded corner at either the right or left for a variety of installation options, for example as a corner bath.



**CENTRO DUO**

The CENTRO DUO is the classically elegant rectangular version.



**CENTRO DUO 6**

The CENTRO DUO 6 captivates with its successful interplay between oval inner form and hexagonal outline.

	Model No.	Length (cm)	Width (cm)	Depth (cm)	Side section length (cm)	Volume in litres*	Weight (kg) ▲	Anti-slip	Full anti-slip	Easy-clean finish	Accessories	Support for tiling	Panel	VIVO TURBO	VIVO TURBO PLUS	VIVO VITA	VIVO AQUA ECO	VIVO AQUA	VIVO VARIO ECO	VIVO VARIO PLUS	Designer
CENTRO DUO OVAL	127	170	75	47		156	49	•	•	•	CIOS		M	•	•	•	•	•	•	•	Sottsass
	127-7	170	75	47		156		•	•	•	CIO		M	•	•	•	•	•	•	•	Sottsass
	128	180	80	47		195	53	•	•	•	CIOS		M	•	•	•	•	•	•	•	Sottsass
	128-7	180	80	47		195		•	•	•	CIO		M	•	•	•	•	•	•	•	Sottsass
CENTRO DUO 2	131	170	75	47		156	52	•	•	•	CIOS		M	•	•	•	•	•	•	•	Sottsass
	135	180	80	47		195	53	•	•	•	CIOS		M	•	•	•	•	•	•	•	Sottsass
CENTRO DUO 1 right	130	170	75	47		156	53	•	•	•	CIOS		M	•	•	•	•	•	•	•	Sottsass
	137	180	80	47		195	56	•	•	•	CIOS		M	•	•	•	•	•	•	•	Sottsass
CENTRO DUO 1 left	129	170	75	47		156	53	•	•	•	CIOS		M	•	•	•	•	•	•	•	Sottsass
	136	180	80	47		195	56	•	•	•	CIOS		M	•	•	•	•	•	•	•	Sottsass
CENTRO DUO	132	170	75	47		156	53	•	•	•	CIOS		M	•	•	•	•	•	•	•	Sottsass
	133	180	80	47		195	58	•	•	•	CIOS		M	•	•	•	•	•	•	•	Sottsass
CENTRO DUO 6	134	200	75	47	142.5	156	53	•	•	•	CIOS		M	•	•	•	•	•	•	•	Sottsass

\* water capacity less average 70-litre displacement  
▲ weight of the enamelled bath

x = standard feature  
• = for an additional charge

\* = for mounting handles, available at extra charge  
C = COMFORT-LEVEL/COMFORT-LEVEL PLUS  
I = indirect lighting

M = MULTIVERSO panelling system for whirl baths  
O = decoration  
S = waterfall bath inlet

**THE FREEDOM TO MOVE  
WITHOUT CONSTRAINT.**



**CORPO DUO STAR**

In this classic rectangular bath with a generous 1 m width, you can enjoy unbridled freedom of movement. That also goes of course for bathing together. With two identical sloping backrests and a central waste, there's nothing standing in the way of your bathing pleasure.



**STUDIO STAR right and left**

The STUDIO/STUDIO STAR brings atmosphere to the bathroom – along with new planning options. Because this stylish bath is all about comfort and design. Inside, with a generously proportioned backrest area and integrated armrests. Outside, with a harmonious asymmetrical shape. Available in both right and left-handed models and with panel.



**DUO POOL**

At 50.5 cm depth, the DUO POOL is a bath for true indulgence. What's more, thanks to its unusually compact length and generous width, the DUO POOL's spaciousness can be yours in virtually any size of bathroom.

**DESIGN PLUS**



**TWIN POOL**

The TWIN POOL's compact outer dimensions and six corners offer plenty of installation options. But don't let the small exterior fool you: inside, this bath is exceedingly spacious.



	Model No.	Length (cm)	Width (cm)	Depth (cm)	Side section length (cm)	Volume in litres*	Weight (kg) ▲	Anti-slip	Full anti-slip	Easy-clean finish	Accessories	Support for tiling	Panel	VIVO TURBO	VIVO TURBO PLUS	VIVO VITA	VIVO AQUA ECO	VIVO AQUA	VIVO VARIO ECO	VIVO VARIO PLUS	Designer
CORPO DUO/CORPO DUO STAR	806/807*	190	100	43.5		180	66	•	•	•	C										Phoenix
STUDIO/STUDIO STAR right	826/827*	170	90	43		149	54	•	•	•	C	•	•	•	•						Phoenix
STUDIO/STUDIO STAR left	828/829*	170	90	43		149	54	•	•	•	C	•	•	•	•						Phoenix
DUO POOL	150	150	100	50.5		240	54	•	•	•	COS	•	•								Sottsass
TWIN POOL	660	170	100	47	121.5	150	48	•		•	C		M	•	•						Phoenix

° water capacity less average 70-litre displacement  
▲ weight of the enamelled bath

x = standard feature  
• = for an additional charge

\* = for mounting handles, available at extra charge  
C = COMFORT-LEVEL/COMFORT-LEVEL PLUS  
I = indirect lighting

M = MULTIVERSO panelling system for whirl baths  
O = decoration  
S = waterfall bath inlet



# SHOWERING IN COMFORT AND STYLE.



### CONOPLAN

Distinguished by a striking geometric form and central waste, the CONOPLAN provides a spacious backdrop for comfortable showering. This shower tray can be combined with the CONODUO bath for integrated bathroom design.

### CORNEZZA

This pentagonal shower tray boasts a streamlined form reduced to the essentials. Featuring plenty of standing room for great freedom of movement and the option of floor-level installation for more elegance in the bathroom.

### BELLEZZA

In the BELLEZZA, the soft rounded lines within form an appealing contrast to the angular outer contours. This shower tray represents an ideal corner solution and is optionally available with apron.



### LADOPLAN

Sophisticated design. Pure pleasure. That sums up this floor-level shower. The elegant waste cover positioned to the side is integrated harmoniously into the overall design.



### MEGAPLAN

With its crisp geometric contours, the MEGAPLAN is the embodiment of clarity and purism. Its shallowness makes getting in and out especially easy and enables floor-level installation.



DESIGN PLUS

	Model No.	Length (cm)	Width (cm)	Depth (cm)	Weight (kg) <sup>▲</sup>	Anti-slip	Full anti-slip	Easy-clean finish	Accessories	Support	Support and enamelled panel	Apron	Base	Designer
LADOPLAN	762	90	90	3.5		•	•	•	0	•				Kaldewei
	764	80	100	3.5		•	•	•	0	•				Kaldewei
	768	100	100	3.5		•	•	•	0	•				Kaldewei
MEGAPLAN	505	90	120	3.6	32	•		•		•		x		Sottsass
CONOPLAN	532	90	90	2.5	22	•	•	•		•				Sottsass
	533	90	90	2.5	24	•	•	•		•		x		Sottsass
	534	100	100	2.5	27	•	•	•		•				Sottsass
	535	100	100	2.5	29	•	•	•		•		x		Sottsass
	536	90	120	2.5	28	•	•	•		•				Sottsass
CORNEZZA	537	90	120	2.5	32	•	•	•		•		x		Sottsass
	670	90	90	2.5	19	•		•		•				Phoenix
	672	100	100	2.5	23	•		•		•				Phoenix
	671	90	90	6.5	20	•		•		•				Phoenix
	680	90	90	6.5	23	•		•		•		x		Phoenix
BELLEZZA	673	100	100	6.5	24	•		•		•				Phoenix
	681	100	100	6.5	28	•		•		•		x		Phoenix
	578	90	90	2.5	20	•		•		•				Phoenix
BELLEZZA	579	100	100	2.5	23	•		•		•				Phoenix
	572	90	90	6.5	21	•		•		•				Phoenix
	573	90	90	6.5	25	•		•		•		x	•	Phoenix
	575	100	100	6.5	25	•		•		•				Phoenix
	576	100	100	6.5	27	•		•		•		x	•	Phoenix
	571	90	90	12.8	24	•		•		•	•			Phoenix
	574	100	100	12.8	28	•		•		•	•			Phoenix

▲ weight of the enamelled shower tray

x = standard feature  
• = for an additional charge

\* = for mounting handles, available at extra charge  
M = MULTIVERSO panelling system for whirl baths

0 = decoration

**FASCINATINGLY FLAT.  
SURPRISINGLY SPACIOUS.**



**SUPERPLAN**

Less is more. The SUPERPLAN is an impressive demonstration of this principle. With just 2.5 cm in depth, this shower tray is extremely shallow, making it ideal for installation at floor level. Elegant design turns your everyday shower into an exclusive experience.



**SUPERPLAN XXL**

The SUPERPLAN XXL is the new dimension in showering. Thanks to its installation at floor level, this shower tray represents a successful combination of spaciousness and elegance.

	Model No.	Length (cm)	Width (cm)	Depth (cm)	Weight (kg) <sup>▲</sup>	Anti-slip	Full anti-slip	Easy-clean finish	Accessories	Support	Support and enamelled panel	Apron	Base	Designer
SUPERPLAN	385	75	80	2.5	17	•	•	•	0	•				Phoenix
	386	80	80	2.5	18	•	•	•	0	•				Phoenix
	400	70	90	2.5	17	•	•	•	0	•				Phoenix
	387	75	90	2.5	18	•	•	•	0	•				Phoenix
	388	80	90	2.5	19	•	•	•	0	•				Phoenix
	390	90	90	2.5	22	•	•	•	0	•				Phoenix
	402	75	100	2.5	20	•	•	•	0	•				Phoenix
	398	80	100	2.5	21	•	•	•	0	•				Phoenix
	404	90	100	2.5	24	•	•	•	0	•				Phoenix
	391	100	100	2.5	27	•	•	•	0	•				Phoenix
	405	90	110	2.5	26	•	•	•	0	•				Phoenix
	401	70	120	2.5	23	•	•	•	0	•				Phoenix
	403	75	120	2.5	24	•	•	•	0	•				Phoenix
	389	80	120	2.5	25	•	•	•	0	•				Phoenix
	406	90	120	2.5	29	•	•	•	0	•				Phoenix
	407	100	120	2.5	31	•	•	•	0	•				Phoenix
	399	120	120	2.5	37	•	•	•	0	•				Phoenix
SUPERPLAN XXL	408	70	140	3.9	26	•	•	•	0	•				Phoenix
	410	75	140	4.0	28	•	•	•	0	•				Phoenix
	429	90	140	4.3	33	•	•	•	0	•				Phoenix
	412	100	140	4.3	36	•	•	•	0	•				Phoenix
	413	150	150	5.2	55	•	•	•	0	•				Phoenix
	409	70	170	4.7	32	•	•	•	0	•				Phoenix
	411	75	170	4.7	33	•	•	•	0	•				Phoenix
430	90	170	5.1	40	•	•	•	0	•				Phoenix	

▲ weight of the enamelled shower tray

x = standard feature      0 = decoration  
• = for an additional charge

## TO EACH BATHROOM ITS OWN CHARACTER.



### VAIO DUO OVAL

The VAIO DUO OVAL with its comfortable arm-rests, two sloping backrests and central waste is the ideal bath for two. It is also available with an optional one-part moulded panel.



### VAIO STAR

The one-person VAIO can be equipped with handles for additional safety.



### VAIO DUO

The classic rectangular VAIO DUO provides a wide range of installation options.



### VAIO SET STAR

Bath or shower? With the elegant combi-bath VAIO SET/VAIO SET STAR, versatility and comfort are yours, whichever you choose.



### VAIO 6 STAR

The one-person VAIO 6/VAIO 6 STAR offers a spacious interior with a width of 90 cm.



### VAIO DUO 6

The VAIO DUO 6 has six corners for a choice of installation positions.



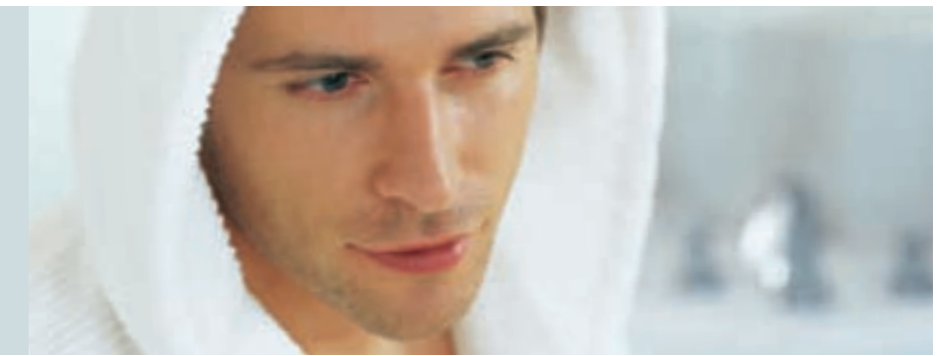
### VAIO DUO 8

This classic octagonal bath can be incorporated into nearly any bathroom floor plan.



### VAIO DUO 3

As a corner bath, the VAIO DUO 3 offers plenty of room for two. Its optionally available harmoniously curving exterior panel further accentuates its good looks.



	Model No.	Length (cm)	Width (cm)	Depth (cm)	Side section length (cm)	Volume in litres <sup>°</sup>	Weight (kg) <sup>▲</sup>	Anti-slip	Full anti-slip	Easy-clean finish	Accessories	Support for tiling	Panel	VIVO TURBO	VIVO TURBO PLUS	VIVO VITA	VIVO AQUA ECO	VIVO AQUA	VIVO VARIO ECO	VIVO VARIO PLUS	Designer
VAIO DUO OVAL	951	180	80	43		155	51	•	•	•	C		M	•	•	•					Phoenix
	951-7	180	80	43		155		•	•	•	C		x			•					Phoenix
VAIO/VAIO STAR	960/961*	170	80	43		145	50	•	•	•	C		M	•	•						Phoenix
VAIO DUO	950	180	80	43		155	54	•	•	•	C		M	•	•	•					Phoenix
VAIO SET/VAIO SET STAR	956/957*	160	70	43		96	46	•	•	•	C		M	•	•						Phoenix
	954/955*	170	75	43		134	50	•	•	•	C		M	•	•						Phoenix
VAIO 6/VAIO 6 STAR	958/959*	190	90	43	135.7	145	48	•	•	•	C		M	•	•	•					Phoenix
VAIO DUO 6	952	210	80	43	149.9	155	51	•	•	•	C		M	•	•	•					Phoenix
VAIO DUO 8	953	180	80	43	149.9	155	49	•	•	•	C		M	•	•	•					Phoenix
VAIO DUO 3	962	196.1	140.1	43	140	125	53			•	C			•	•	•	•	•	•	•	Phoenix
	962-7	196.1	140.1	43	140	125				•	C		x	•	•	•	•	•	•	•	Phoenix

<sup>°</sup> water capacity less average 70-litre displacement  
<sup>▲</sup> weight of the enamelled bath

x = standard feature  
• = for an additional charge

\* = for mounting handles, available at extra charge  
C = COMFORT-LEVEL/COMFORT-LEVEL PLUS  
I = indirect lighting

M = MULTIVERSO panelling system for whirl baths  
O = decoration  
S = waterfall bath inlet

## JUST MADE FOR HEAD TO TOE RELAXATION.



### NOVOLA DUO OVAL STAR

The NOVOLA DUO OVAL/NOVOLA DUO OVAL STAR is destined to become an eye-catcher in any bathroom with its oval exterior form.



### NOVOLA STAR

The generous scalloped inner contours of the NOVOLA/NOVOLA STAR offer the option of several different sitting and reclining positions.



### NOVOLA DUO STAR

Thanks to the two sloping backrests and central waste, the NOVOLA DUO/NOVOLA DUO STAR is a comfortable place to relax with a friend.



### NOVOLA SET STAR

The one-person NOVOLA SET/NOVOLA SET STAR is a master of diversity: it's not only a comfortable bath where you can recline at ease, but also has a level floor for secure footing and freedom of movement when showering.



### NOVOLA DUO 6 STAR

This bath is just made to pamper you from head to toe. The hexagonal external contours of the NOVOLA DUO 6/NOVOLA DUO 6 STAR allow for installation in a variety of positions.



### NOVOLA DUO 8 STAR

With its sinuous inner form and overflow positioned on the side, the NOVOLA DUO 8/NOVOLA DUO 8 STAR provides an inviting retreat. Its eight corners offer a wide variety of installation options.

	Model No.	Length (cm)	Width (cm)	Depth (cm)	Side section length (cm)	Volume in litres°	Weight (kg)▲	Anti-slip	Full anti-slip	Easy-clean finish	Accessories	Support for tiling	Panel	VIVO TURBO	VIVO TURBO PLUS	VIVO VITA	VIVO AQUA ECO	VIVO AQUA	VIVO VARIO ECO	VIVO VARIO PLUS	Designer
NOVOLA DUO OVAL/ NOVOLA DUO OVAL STAR	260/270*	180	80	44		197	53	•	•	•	C	M					•				Kurz
NOVOLA/NOVOLA STAR	252/253*	170	75	44		153	51	•	•	•	C	M					•				Kurz
NOVOLA DUO/NOVOLA DUO STAR	256/257*	180	80	44		197	56	•	•	•	C	M					•				Kurz
NOVOLA SET/NOVOLA SET STAR	261/262*	170	80	44		155	55	•	•	•	C	M					•				Kurz
NOVOLA DUO 6/ NOVOLA DUO 6 STAR	254/255*	210	80	44	149.9	197	55	•	•	•	C	M					•				Kurz
NOVOLA DUO 8/ NOVOLA DUO 8 STAR	258/259*	180	80	44	149.8	197	53	•	•	•	C	M					•				Kurz

° water capacity less average 70-litre displacement  
▲ weight of the enamelled bath

x = standard feature  
• = for an additional charge

\* = for mounting handles, available at extra charge  
C = COMFORT-LEVEL/COMFORT-LEVEL PLUS  
I = indirect lighting

M = MULTIVERSO panelling system for whirl baths  
O = decoration  
S = waterfall bath inlet

## STRIKING LOOKS. OPULENT ENJOYMENT.



### RETRO STAR

The RETRO baths represent a modern expression of the elegant Art Deco style. The luxurious length of the RETRO/RETRO STAR lends further impact to its striking good looks.



### RETRO 6 STAR

The RETRO 6/RETRO 6 STAR has a unique and sophisticated shape, giving your bathroom an unmistakable character, while its hexagonal outline offers flexible installation options.



### RETRO 8 STAR

Octagonal inside, octagonal outside. The RETRO 8/RETRO 8 STAR not only exudes a timeless beauty, it also offers a generous interior in which to recline comfortably.



### RONDO STAR

It's always nice to have someone to lean on. The gentle interior curves of the RONDO/RONDO STAR offer plenty of space for a bather to rest against. And the broad armrests ensure additional comfort.



### RONDO 6 STAR

Added flexibility to fit in all mounting situations is offered by the hexagonal RONDO 6/RONDO 6 STAR.



### RONDO 8 STAR

The cleverly orchestrated inner curves of the RONDO 8/RONDO 8 STAR create space for the ultimate in relaxed reclining. And thanks to its octagonal outer form, this bath can be integrated into virtually any bathroom floor plan.

	Model No.	Length (cm)	Width (cm)	Depth (cm)	Side section length (cm)	Volume in litres <sup>°</sup>	Weight (kg) <sup>▲</sup>	Anti-slip	Full anti-slip	Easy-clean finish	Accessories	Support for tiling	Panel	VIVO TURBO	VIVO TURBO PLUS	VIVO VITA	VIVO AQUA ECO	VIVO AQUA	VIVO VARIO ECO	VIVO VARIO PLUS	Designer
RETRO/RETRO STAR	820/821*	190	90	45		194	64	•	•	•	CS		M	•	•		•				Phoenix
RETRO 6/RETRO 6 STAR	824/825*	190	80	45	135.7	134	49	•	•	•	CS		M	•	•		•				Phoenix
RETRO 8/RETRO 8 STAR	822/823*	180	90	45	160	194	59	•	•	•	CS		M	•	•		•				Phoenix
RONDO/RONDO STAR	700/701*	170	75	44		130	51	•	•	•	CS		M	•	•	•	•	•	•	•	Phoenix
	710/711*	180	80	44		178	57	•	•	•	CS		M	•	•	•	•	•	•	•	Phoenix
RONDO 6/RONDO 6 STAR	706/707*	197	75	44	140.6	130	48	•	•	•	CS		M	•	•	•	•	•	•	•	Phoenix
	716/717*	206	80	44	147	178	54	•	•	•	CS		M	•	•	•	•	•	•	•	Phoenix
RONDO 8/RONDO 8 STAR	708/709*	170	75	44	140.6	130	49	•	•	•	CS		M	•	•	•	•	•	•	•	Phoenix
	718/719*	180	80	44	150	178	54	•	•	•	CS		M	•	•	•	•	•	•	•	Phoenix

<sup>°</sup> water capacity less average 70-litre displacement  
<sup>▲</sup> weight of the enamelled bath

x = standard feature  
 • = for an additional charge

\* = for mounting handles, available at extra charge  
 C = COMFORT-LEVEL/COMFORT-LEVEL PLUS  
 I = indirect lighting

M = MULTIVERSO panelling system for whirl baths  
 O = decoration  
 S = waterfall bath inlet

## WHEN COMFORT IS THE MEASURE OF ALL THINGS.



### PURO

PURO is the perfect example of clear-lined, purist design in which all elements have been reduced to the essentials. This concept carries contemporary home design into the bathroom to create a harmonious overall aesthetic.



### CLASSIC DUO OVAL

Not too much and not too little. With its balanced, timeless shape, the CLASSIC DUO OVAL is always a good choice. The height of simplicity, the height of comfort. The two identical sloping backrests make this bath ideal for sharing.



### CLASSIC DUO

As a classic rectangular bath, CLASSIC DUO offers the appeal of timeless, balanced forms and comfortable proportions.



### AQUAMARIN STAR

With its ergonomically formed backrest and raised neck rest, the AQUAMARIN/AQUAMARIN STAR is synonymous with the height of bathing comfort. And its extra length ensures that even the tallest people can recline in luxury.

	Model No.	Length (cm)	Width (cm)	Depth (cm)	Side section length (cm)	Volume in litres°	Weight (kg) ▲	Anti-slip	Full anti-slip	Easy-clean finish	Accessories	Support for tiling	Panel	VIVO TURBO	VIVO TURBO PLUS	VIVO VITA	VIVO AQUA ECO	VIVO AQUA	VIVO VARIO ECO	VIVO VARIO PLUS	Designer
PURO	652	170	75	42		137	50	•	•	•	O										Kaldewei
	653	180	80	42		165	54	•	•	•	O										Kaldewei
CLASSIC DUO OVAL	111	180	80	43		158	50	•	•	•	COS		M	•	•	•	•	•	•	•	Sottsass
CLASSIC DUO	103	160	70	43		95	44	•	•	•	COS										Sottsass
	105	170	70	43		110	47	•	•	•	COS		M	•	•	•	•	•	•	•	Sottsass
	107	170	75	43		122	48	•	•	•	COS		M	•	•	•	•	•	•	•	Sottsass
	109	180	75	43		143	50	•	•	•	COS		M	•	•	•	•	•	•	•	Sottsass
	110	180	80	43		158	53	•	•	•	COS		M	•	•	•	•	•	•	•	Sottsass
AQUAMARIN/	280/281*	180	80	42		131	55	•	•	•	CO		M	•	•		•				Flacke
AQUAMARIN STAR	284/285*	190	90	42		175	62	•	•	•	CO		M	•	•		•				Flacke

° water capacity less average 70-litre displacement  
▲ weight of the enamelled bath

x = standard feature  
• = for an additional charge

\* = for mounting handles, available at extra charge  
C = COMFORT-LEVEL/COMFORT-LEVEL PLUS  
I = indirect lighting

M = MULTIVERSO panelling system for whirl baths  
O = decoration (only for baths without handles)  
S = waterfall bath inlet

## MAKING THE MOST OF THE SPACE AT HAND.



### DYNA STAR

The basic form of the DYNA/DYNA STAR with its broad backrest puts plenty of space at your disposal for relaxed bathing, while the tapered shape means lower water consumption.



### DYNA DUO

Two people, one bath: in the DYNA DUO two comfortable sloping backrests and a central waste make for a bath just meant to be shared. The high position of the overflow allows for a high water level, letting you really immerse yourself in the water.



### DYNA SET STAR

The DYNA SET/DYNA SET STAR is a combi-bath that's ideal for either bathing or showering. A broad, level standing area for plenty of freedom of movement belies the compact outer dimensions of this bath.



### SENTO STAR

It's no exaggeration to call the SENTO STAR a timeless beauty. This ergonomically formed one-person bath with a clean-lined, classic design features a tapered shape to save on water.

	Model No.	Length (cm)	Width (cm)	Depth (cm)	Side section length (cm)	Volume in litres°	Weight (kg) ▲	Anti-slip	Full anti-slip	Easy-clean finish	Accessories	Support for tiling	Panel	VIVO TURBO	VIVO TURBO PLUS	VIVO VITA	VIVO AQUA ECO	VIVO AQUA	VIVO VARIO ECO	VIVO VARIO PLUS	Designer
DYNA/DYNA STAR	393/394*	170	75	43		124	51	•	•	•	CO										Phoenix
	630/631*	190	75	43		157	69	•	•	•	CO										Phoenix
DYNA DUO	610	170	75	43		140	49	•	•	•											Phoenix
	611	180	80	45		200	62	•	•	•											Phoenix
DYNA SET/DYNA SET STAR	632/633*	160	70	39		101	44	•	•	•	C										Phoenix
	634/635*	170	75	39		118	50	•	•	•	C										Phoenix
	626/627*	160	70	43		122	46	•	•	•	C		M	•	•		•				Phoenix
	624/625*	150	75	43		133	45	•	•	•	C		M	•	•		•				Phoenix
	620/621*	170	75	43		169	53	•	•	•	C		M	•	•		•				Phoenix
SENTO STAR	622/623*	180	80	43		169	68	•	•	•	C		M	•	•		•				Phoenix
	377*	170	80	43		130	51	•	•	•	CS										Phoenix
	378*	180	80	43		140	55	•	•	•	CS										Phoenix

° water capacity less average 70-litre displacement  
▲ weight of the enamelled bath

x = standard feature  
• = for an additional charge

\* = for mounting handles, available at extra charge  
C = COMFORT-LEVEL/COMFORT-LEVEL PLUS  
I = indirect lighting

M = MULTIVERSO panelling system for whirl baths  
O = decoration (only for baths without handles)  
S = waterfall bath inlet

## SHOWERING PLEASURE IN A VARIETY OF SIZES. FOR A VARIETY OF NEEDS.



### DUSCHPLAN

The simple things in life are sometimes the most refreshing. Like the DUSCHPLAN with its modern, timeless design and only 6.5 cm depth. This classic shower tray can be easily integrated into any bathroom.



### DUSCHPLAN XXL

To free your head, you first need more freedom of movement for your body. Of course, that also goes for showering with a friend. Thanks to its exceptional length and width, the DUSCHPLAN XXL offers more than enough room to fulfil a variety of needs.

	Model No.	Length (cm)	Width (cm)	Depth (cm)	Weight (kg) <sup>▲</sup>	Anti-slip	Full anti-slip	Easy-clean finish	Accessories	Support	Support and enamelled panel	Apron	Base	Designer
DUSCHPLAN	554	75	80	6.5	18	•		•		•				Phoenix
	542	80	80	6.5	19	•		•		•				Phoenix
	521	80	80	6.5	22	•		•		x		x		Phoenix
	547	70	90	6.5	19	•		•		•				Phoenix
	543	75	90	6.5	20	•		•		•				Phoenix
	544	80	90	6.5	21	•		•		•				Phoenix
	545	90	90	6.5	24	•		•		•				Phoenix
	523	90	90	6.5	27	•		•			x		x	Phoenix
	416	75	100	6.5	22	•		•			•			Phoenix
	546	80	100	6.5	23	•		•			•			Phoenix
	418	90	100	6.5	26	•		•			•			Phoenix
	392	100	100	6.5	28	•		•			•			Phoenix
	419	90	110	6.5	28	•		•			•			Phoenix
	415	70	120	6.5	24	•		•			•			Phoenix
	417	75	120	6.5	26	•		•			•			Phoenix
	555	80	120	6.5	26	•		•			•			Phoenix
	420	90	120	6.5	31	•		•			•			Phoenix
	421	100	120	6.5	34	•		•			•			Phoenix
	422	120	120	6.5	40	•		•			•			Phoenix
	DUSCHPLAN XXL	423	70	140	6.5	27	•	•	•		•			
425		75	140	6.5	29	•	•	•		•				Phoenix
427		100	140	6.5	38	•	•	•		•				Phoenix
428		150	150	6.5	58	•	•	•		•				Phoenix
424		70	170	6.5	33	•	•	•		•				Phoenix
426		75	170	6.5	35	•	•	•		•				Phoenix

▲ weight of the enamelled shower tray

x = standard feature

O = decoration

• = for an additional charge



## SMALL BATHROOM, VERSATILE SOLUTIONS.



### ARRONDO

This quarter-circular shower tray captivates with its minimalist formal language, based on the fascinating dialogue between circle and square. In ARRONDO the large standing area offers plenty of freedom of movement when showering.



### FONTANA

The FONTANA not only fits perfectly in any corner, its semicircular outer contour also saves space while providing a lovely design highlight. A generous standing area offers great freedom of movement when showering. The FONTANA is also available with apron.



	Model No.	Length (cm)	Width (cm)	Depth (cm)	Weight (kg) <sup>▲</sup>	Anti-slip	Full anti-slip	Easy-clean finish	Accessories	Support	Support and enamelled panel	Apron	Base	Designer
ARRONDO	870	90	90	2.5	20	•		•		•				Phoenix
	872	100	100	2.5	25	•		•		•				Phoenix
	871	90	90	6.5	21	•		•		•				Phoenix
	880	90	90	6.5	25	•		•		•		x		Phoenix
	873	100	100	6.5	26	•		•		•				Phoenix
	881	100	100	6.5	30	•		•		•		x		Phoenix
FONTANA	594	80	80	2.5	18	•		•		•				Frog
	564	90	90	2.5	21	•		•		•				Frog
	565	100	100	2.5	25	•		•		•				Frog
	583	80	80	6.5	18	•		•		•				Frog
	567	80	80	6.5	22	•		•		•		x	•	Frog
	586	90	90	6.5	21	•		•		•				Frog
	568	90	90	6.5	26	•		•		•		x	•	Frog
	587	100	100	6.5	29	•		•		•				Frog
	569	100	100	6.5	30	•		•		•		x	•	Frog
	584	80	80	13	19	•		•		•		•		Frog
	585	90	90	13	24	•		•		•		•		Frog
	589	100	100	13	30	•		•		•		•		Frog

▲ weight of the enamelled shower tray

x = standard feature  
• = for an additional charge

O = decoration

## EVERY FAMILY HAS DIFFERENT NEEDS.



### SANIFORM PLUS

There are shapes that have simply become a part of our everyday lives. Like the one-person SANIFORM PLUS with waste positioned at the foot end, one of the classic baths designed to fit the human body, which looks good in any bathroom.



### SANIFORM PLUS STAR

Just like the SANIFORM PLUS, the SANIFORM PLUS STAR lets you recline in perfect comfort, while the handles provide added safety.



### SANIFORM MEDIUM STAR

The low 31.5 cm height of the SANIFORM MEDIUM/ SANIFORM MEDIUM STAR not only significantly reduces water consumption, the low edge also makes getting in and out especially easy.



### SANIFORM V1-V4 STAR, version V3

For ideal space utilisation in a small bathroom, the SANIFORM V1-V4/ SANIFORM V1-V4 STAR were deliberately designed with one corner missing. Which corner is of course up to you, since there are four designs to choose from.



### SANILUX STAR

The elegant SANILUX/SANILUX STAR is a rectangular bath marked by a consistently clear flow of line. The softly curving, fluid inner form gives this one-person bath its character. With a rounded neck section for comfortable relaxation.



### MINI STAR right and left

With its special shape, the MINI/MINI STAR offers a spacious bath even in the smallest bathroom. This one-person bath with side waste is available as either a right or left-handed model.

	Model No.	Length (cm)	Width (cm)	Depth (cm)	Side section length (cm)	Volume in litres <sup>°</sup>	Weight (kg) <sup>▲</sup>	Anti-slip	Full anti-slip	Easy-clean finish	Accessories	Support for tiling	Panel	VIVO TURBO	VIVO TURBO PLUS	VIVO VITA	VIVO AQUA ECO	VIVO AQUA	VIVO VARIO ECO	VIVO VARIO PLUS	Designer
SANIFORM/SANIFORM STAR	374/338*	175	75	43		145	55	•	•	•	CO										Phoenix
SANIFORM PLUS/	360-1/330*	140	70	41		67	40	•	•	•	CO										Phoenix
SANIFORM PLUS STAR	361-1/331*	150	70	41		82	40	•	•	•	CO										Phoenix
	362-1/332*	160	70	41		93	44	•	•	•	CO										Phoenix
	363-1/335*	170	70	41		97	48	•	•	•	CO										Phoenix
	371-1/334*	170	73	41		97	49	•	•	•	CO										Phoenix
	372-1/333*	160	75	41		107	45	•	•	•	CO										Phoenix
	373-1/336*	170	75	41		123	50	•	•	•	CO										Phoenix
	375-1/337*	180	80	43		150	55	•	•	•	CO										Phoenix
	366/344*	140	75	48		110	42	•	•	•	CO										Phoenix
	367/345*	160	75	48		140	49	•	•	•	CO										Phoenix
SANIFORM MEDIUM/	245/246*	170	70	31.5		53	44	•	•	•	C										Phoenix
SANIFORM MEDIUM STAR																					
SANIFORM V1-V4/	362-1/332*	160	70	41		93	44	•	•	•	C										Phoenix
SANIFORM V1-V4 STAR																					
SANILUX/SANILUX STAR	342/343*	170	75	43		124	49	•	•	•	C										Phoenix
MINI right/MINI STAR right	834/835*	157	70/47.5	43		110	45	•	•	•	C										Phoenix
	830/831*	157	75/50	43		110	52	•	•	•	C										Phoenix
MINI left/MINI STAR left	836/837*	157	70/47.5	43		110	45	•	•	•	C										Phoenix
	832/833*	157	75/50	43		110	52	•	•	•	C										Phoenix

<sup>°</sup> water capacity less average 70-litre displacement  
<sup>▲</sup> weight of the enamelled bath

x = standard feature  
 • = for an additional charge

\* = for mounting handles, available at extra charge  
 C = COMFORT-LEVEL/COMFORT-LEVEL PLUS  
 I = indirect lighting

M = MULTIVERSO panelling system for whirl baths  
 O = decoration (only for baths without handles)  
 S = waterfall bath inlet

## TRUE CLASSICS NEVER GO OUT OF STYLE.



### SANIDUSCH, depth 14

With their modern, clean lines, the SANIDUSCH shower trays are bathroom classics. The SANIDUSCH is not only available in two different depths, but also in variable widths and lengths in either rectangular or square shapes.



### ZIRKON

Streamlined design and plenty of standing room, but without taking up too much space. There are lots of good reasons to start your day by showering with ZIRKON. For example, the elegant quarter-circular shape, for intelligent installation in even the smallest space.

	Model No.	Length (cm)	Width (cm)	Depth (cm)	Weight (kg) <sup>▲</sup>	Anti-slip	Full anti-slip	Easy-clean finish	Accessories	Support	Support and enamelled panel	Apron	Base	Designer
SANIDUSCH, depth 14	522	80	80	12.5	27	•		•		x		x		Phoenix
	524	90	90	12.5	33	•		•		x		x		Phoenix
	540	70	75	14	19	•		•						Phoenix
	548	75	80	14	21	•		•						Phoenix
	395	80	80	14	22	•		•						Phoenix
	541	70	85	14	21	•		•						Phoenix
	539	70	90	14	22	•		•						Phoenix
	549	75	90	14	23	•		•						Phoenix
	551	80	90	14	24	•		•						Phoenix
	396	90	90	14	27	•		•						Phoenix
	550	80	100	14	27	•		•						Phoenix
	397	100	100	14	31	•		•						Phoenix
	552	80	120	14	30	•		•						Phoenix
SANIDUSCH, depth 25 with overflow	558	75	80	25	25	•		•						Phoenix
	495	80	80	25	27	•		•						Phoenix
	559	75	90	25	30	•		•						Phoenix
	496	90	90	25	32	•		•						Phoenix
ZIRKON	501	90	75	3.5	17	•		•		•				
	600	80	80	3.5	17	•		•		•				
	603	90	80	3.5	19	•		•		•				
	605	100	80	3.5	21	•		•		•				
	502	75	90	3.5	17	•		•		•				
	601	80	90	3.5	19	•		•		•				
	604	90	90	3.5	22	•		•		•				
	602	80	100	3.5	21	•		•		•				
	606	100	100	3.5	25	•		•		•				
	503	90	75	6.5	18	•		•		•				
	511	80	80	6.5	17	•		•		•				
	508	90	80	6.5	19	•		•		•				
	509	100	80	6.5	22	•		•		•				
	504	75	90	6.5	18	•		•		•				
	506	80	90	6.5	19	•		•		•				
	513	90	90	6.5	22	•		•		•				
	507	80	100	6.5	22	•		•		•				
	510	100	100	6.5	26	•		•		•				
	512	80	80	14	20	•		•		•				
	514	90	90	14	24	•		•		•				

▲ weight of the enamelled shower tray

x = standard feature

• = for an additional charge

○ = decoration

## THE WHIRPOOL SYSTEMS 38/39



Side jet in VIVO TURBO and VIVO TURBO PLUS



Side jet with air mixture in VIVO AQUA ECO, VIVO AQUA and VIVO VARIO ECO



Rotating side jet with air mixture in VIVO VARIO PLUS



Microjet with air mixture in VIVO VARIO PLUS



Floor jet with air in VIVO VITA and VIVO VARIO ECO



Floor jet with air and Kaldewei champagne effect in VIVO VARIO PLUS

## SENSUAL PLEASURE COMES FROM MANY SOURCES.

### VIVO TURBO AND VIVO TURBO PLUS

In today's fast-paced world, a relaxing whirlpool bath is prized more highly than ever. Here, you can forget your cares and focus on your body, enjoying the unadulterated pleasure of water with all of your senses. In the VIVO TURBO whirl system, the sheer power of water is harnessed in the service of well-being and relaxation. The whirl intensity ranges from a gentle stimulation of the sensory hairs to a powerful, large-surface massage of the skin, subcutaneous tissue and muscles. The special feature of the VIVO TURBO is the addition of air, which could be integrated into the system while maintaining its outstanding hygienic standards. Individually adjustable whirl programs round out this complete whirlpool experience.

### VIVO VITA

One of the best counterbalances to everyday stress is the weightlessness of floating in a whirl bath. In the VIVO VITA whirl system, a pleasantly effervescent jet of air flows through the water. In the tiny bubbles, pre-warmed air rises from the floor to the surface. On the way, the innumerable air bubbles stimulate the nerve endings of the skin, which feels like a gentle, caressing massage over your entire body. The light massage has a psychologically relaxing, calming effect. This is coupled with the cleansing effect of the fine air bubbles, which is much greater than that of a conventional bath. Using the bath's control panel, you can adjust the whirl intensity continuously to any level you desire, from gentle caress to a sustained, revitalising vibratory massage.

### VIVO AQUA ECO AND VIVO AQUA

The VIVO AQUA ECO system is the perfect entry into the Kaldewei world of whirlness. In this whirl system, three pairs of water massage jets are directed towards your body. If you wish, you can also mix additional air into the water jet, using the Venturi principle, in order to generate a pleasantly massaging pressure on the skin and subcutaneous tissue. The intensity of the added air can be adjusted continuously using a control knob. The VIVO AQUA system is the deluxe version. This whirl system not only has two additional nozzles, the massage effect can also be continuously adjusted via a special foil keyboard. The options range right through to a gentle muscle-loosening massage with a deep relaxation effect.

### VIVO VARIO ECO AND VIVO VARIO PLUS

The VIVO VARIO ECO system ideally unites the benefits of air and water. An especially quiet blower whirls tiny air bubbles up from the floor jets for a caressing massage all over the body. At the same time, water streams from paired side jets to deeply massage the skin and muscles. The whirl intensity can be infinitely adjusted using the bath keyboard. In VIVO VARIO PLUS, the combined effect of floor and side jets is taken a step further. While bubbles rising from the floor jets create a tingling feeling we call the Kaldewei champagne effect, the rotating side jets provide skin and muscles with a pleasant massage. Additional jets integrated into the foot reflex zone and lumbar region ensure a relaxing, whole-body massage. All functions in the VIVO VARIO PLUS can be operated using the convenient remote control.

## COLOUR VARIETY AND COORDINATED COLOURS FOR MORE DESIGN FREEDOM.

With a wide range of colours available for baths, shower trays and whirl baths, Kaldewei offers a huge variety of possibilities for designing a very personal bathroom. Not only is the broad selection impressive, there are also multiple combination options. For example, the Coordinated Colours available for floor-level shower trays were especially chosen to match the latest styles in tile colours.



Coordinated colours for floor-level showers (less than 6 cm deep)



Actual product colours may differ slightly from those illustrated due to the printing process.

The colours shown here correspond to those of the bathroom fittings currently available on the market. Actual product colours may differ slightly from those illustrated due to the printing process.



CENTRO DUO with decoration



SUPERPLAN XXL with decoration



SUPERPLAN with decoration

## CREATIVE INSPIRATION IN THE BATHROOM. THE NEW DECORATION – NOW ALSO AVAILABLE FOR BATHS.

If you are interested in the best in design and are on the lookout for individual creative possibilities, you'll love the new decorative lily, developed by the Phoenix Design Studio in Stuttgart. Whether it's combined with a wooden or stone floor, with natural stone or simple tile walls, this elegant, understated decoration brings a whisper of exoticism to the bathroom. An unforgettable design element for all SUPERPLAN and SUPERPLAN XXL shower trays and now for various Kaldewei bath models. The decoration is available both on white and black enamel.

## HOW TO ENHANCE YOUR BATHING EXPERIENCE.

The ideal union of functionality and aesthetics is what makes bathing, whirling and showering with Kaldewei so incomparably pleasurable. With a choice of more than 250 models of various shapes and sizes. Enhance your bathing comfort even further by adding some multifunctional cushions. Or equip your Kaldewei bath or shower tray with an easy-clean finish for trouble-free care.

### THE MULTIFUNCTIONAL CUSHIONS.

What could be nicer after a hard day than to lie back in the bath in the evening and simply let all your cares drift away? The multifunctional cushions from Kaldewei add even more comfort to your relaxing bath, offering you three different options: as a footrest or placed below the thighs, they keep you from sliding downward in larger baths; as a neck rest they cushion your head and neck; or, placed at the sides of the tub, they give you a place to rest your arms.



### THE EASY-CLEAN FINISH.

These days, cleaning the bath is child's play – if your bath or shower tray is made of Kaldewei steel enamel 3.5 mm with easy-clean finish. Water droplets form beads and simply roll down the sides, taking virtually all dirt particles and lime scale with them. Even dried-on water spots and lime deposits can be quickly whisked away. And since all you need is a soft, damp cloth instead of aggressive cleaners, the easy-clean finish is good for the environment as well.

The easy-clean finish is a surface finish that is permanently burnt onto the Kaldewei steel enamel 3.5 mm. It is notable for its unparalleled durability and long life. Even when the surface is wiped 1-2 times a day, the anti-stick properties of the easy-clean finish remain unchanged 30 years long. We guarantee it. The easy-clean finish is available for all Kaldewei baths and shower trays and comes as standard with whirlpool baths.

**The easy-clean finish. With a 30-year guarantee.**



## LIGHT CREATES A SPECIAL ATMOSPHERE.

Nothing is more effective for creating an individual atmosphere in the bathroom than light. Used during a relaxing bath, coloured light produces a soothing ambience that enhances our feeling of well-being. Light transforms the bathroom into an inviting oasis, with colour impulses stimulating the metabolism and supplying our cells with new energy while body and soul unwind. Different lighting constellations can be chosen to create the desired mood.

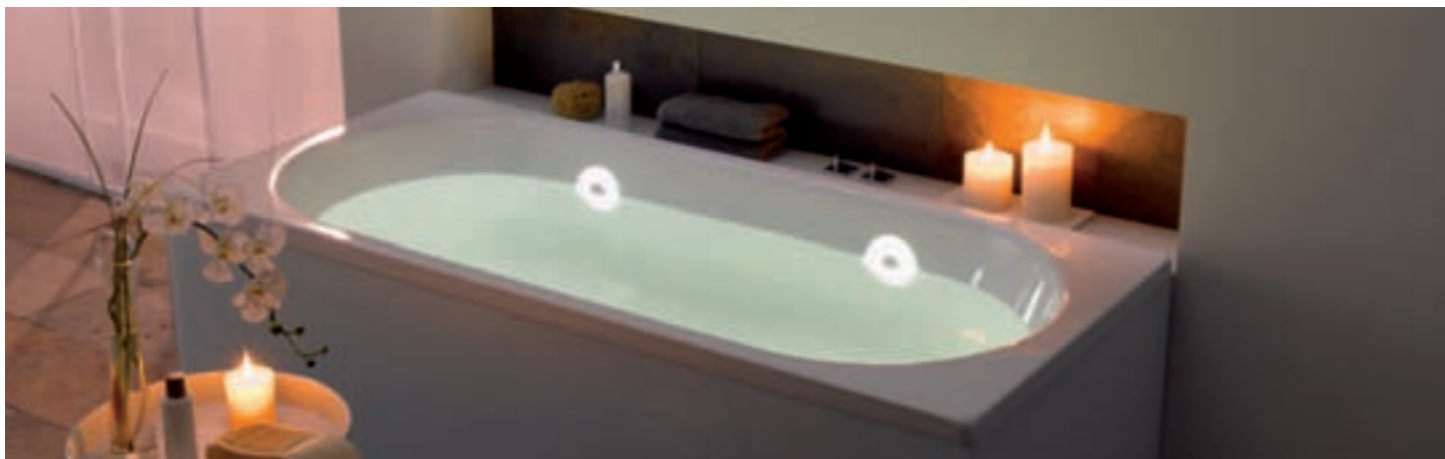


### THE LIGHTING SET FOR BATHS.

The Kaldewei lighting set for baths enhances the bathing experience through mood-making light effects. White light and spectral light spots are available. The set comprises an LED spot, a control unit with power supply cable and a button in the bath for operating the spot.

### INDIRECT LIGHTING FOR BATHS.

With indirect lighting for baths, Kaldewei offers an exclusive lighting concept for those who demand the best in design. Four indirect light sources are sunk in the side of the bath, flush with the surface, creating a subtle lighting mood that is all the more effective for its restraint. Indirect lighting is available for all CENTRO DUO and CONODUO models, but not for baths with whirl system.



COMFORT-LEVEL

COMFORT-LEVEL PLUS

COMFORT-LEVEL/COMFORT-LEVEL PLUS

### THE COMFORT-LEVEL AND THE COMFORT-LEVEL PLUS.

Enjoying a relaxing bath depends not only on how comfortably you can recline, but also how deeply you can submerge your body in the water. With the new COMFORT-LEVEL and COMFORT-LEVEL PLUS with integrated filling function, the water depth can be increased by up to 50 mm while bathing to suit personal preferences. All it takes is one turn of the lever for maximum bathing pleasure.

### THE WATERFALL BATH INLET.

If you enjoy bathing, we have a very special experience in store for you: the Kaldewei waterfall bath inlet. Created by Phoenix Design, Stuttgart/Tokyo, this water inlet is harmoniously integrated into the side wall of the bath. When the tap is turned on, the cover opens automatically, releasing an even stream of water into the bath. The waterfall bath inlet creates a pleasantly tranquil atmosphere without any fixtures on the inner side of the bath to get in the way of complete relaxation. An exhilaratingly elegant solution with a unique combination of form and function to appeal to the most discriminating taste.



## MORE SAFETY WHEN BATHING OR SHOWERING.

To make bathing and showering as safe as possible, handles are available for the bath and anti-slip enamelling for baths and shower trays. With the many different handle combinations available for your Kaldewei bath, you're sure to find just the right one for your own personal needs. They all provide an aesthetically appealing way of adding that little bit of extra safety.



FONTANA with anti-slip



SUPERPLAN with full anti-slip

Kaldewei's anti-slip enamelling is made of a mixture of quartz and sand and burned permanently onto the surface of the Kaldewei steel enamel 3.5 mm. Its textured surface provides extra safety when bathing or showering. The anti-slip coating holds up to years of wear. As an alternative, full anti-slip enamelling over a larger surface area is also available for almost all baths and shower trays. TÜV Rheinland has certified anti-slip and full anti-slip from Kaldewei as slip-resistant in accordance with ratings group B for wet barefoot areas (DIN 51097).



AQUAMARIN STAR



CORPO DUO STAR



DYNA SET STAR



DYNA STAR  
also available for SANIFORM STAR, SANIFORM PLUS STAR, SANIFORM MEDIUM STAR, SANIFORM V1-V4 STAR, MINI STAR



NOVOLA STAR  
available for all NOVOLA STAR models



RETRO STAR  
also available for DYNA STAR, SANIFORM STAR, RONDO STAR, SANILUX STAR



RONDO STAR  
also available for SANILUX STAR, STUDIO STAR, VAIO STAR, VAIO SET STAR, VAIO 6 STAR, DYNA STAR, SANIFORM STAR, MINI STAR, RETRO STAR



SENTO STAR



VAIO SET with anti-slip



CENTRO DUO OVAL with full anti-slip



ELLIPSO DUO OVAL with full anti-slip



# KALDEWEI

Europe's No. 1 for baths

Franz Kaldewei GmbH & Co. KG  
Beckumer Str. 33-35  
59229 Ahlen  
Germany  
tel. +49 2382 785 0  
fax +49 2382 785 200  
internet: www.kaldewei.com

## AUSTRALIA

Bathe  
25 John Street  
Leichhardt NSW 2040  
Australia  
tel. +61 2 9518 0163  
fax +61 2 9518 0216  
e-mail: sales@bathe.net.au

## AUSTRIA

Kaldewei Österreich GmbH  
Ottensheimer Strasse 36  
4040 Linz  
Austria  
tel. +49 2382 785 0  
fax +49 2382 785 200  
e-mail: info@kaldewei.de

## BALTIC STATES

J. Neifeld  
Vilnius  
Lithuania  
tel. +370 699 61931  
fax +370 52 784 187  
e-mail: j.neifeld@ivc.lt

## BELGIUM

Egeda NV  
Toekomstlaan 47  
2200 Herentals  
Belgium  
tel. +32 14 22 26 08  
fax +32 14 22 26 33  
e-mail: info@egeda.be

## CZECH REPUBLIC

Kaldewei CS, s.r.o.  
Ohradní 61a  
140 00 Praha 4  
Czech Republic  
tel. +420 241 092 150  
fax +420 241 092 160  
e-mail: info@kaldewei.cz

## DENMARK

Baheko A/S  
Vandmestervej 37  
2630 Tåstrup  
Denmark  
tel. +45 43991611  
fax +45 43991974  
e-mail: baheko@baheko.dk

## FINLAND

IMG Interiors  
Kanavaranta 7 E  
00160 Helsinki  
Finland  
tel. +358 9 622 9150  
fax +358 9 667 035  
e-mail: img.interiors@co.inet.fi

## GREATER CHINA

Kaldewei Far East Ltd.  
- Shanghai Rep Office -  
9A, East Building, Xin Hua Lian  
755 Huai Hai Zhong Road  
Shanghai 200020  
China  
tel. +86 21 6473 7813  
fax +86 21 6473 7815  
e-mail: kaldewei@china.com

## HUNGARY

Török Szaniter BT  
Solymar 2  
1032 Budapest  
Hungary  
tel. +36 1 2501846  
fax +36 1 4301486  
e-mail: kaldewei@kaldewei.hu

## ICELAND

Trobeco  
Laugavegi 71  
101 Reykjavik  
Iceland  
tel. +354 5 113131  
fax +354 5 627550  
e-mail: trobeco@mmedia.is

## INDIA

Kaldewei Agency India  
Sunil Arora  
India  
tel. +98 998 08421  
e-mail: sunilarora.kaldewei@airtelmail.in

## ITALY

Kaldewei Italia S.r.l.  
Via Julius Durst 44  
39042 Bressanone (BZ)  
Italy  
tel. +39 0472 200 953  
fax +39 0472 208 953  
e-mail: info@kaldewei.it

## JAPAN

Tform  
Taiyo Kanamono Co., Ltd.  
3-15-34 Kozu Chuoku Osaka  
Japan  
tel. +81 6 6632 2838  
fax +81 6 6633 7790  
e-mail: info@tform.co.jp

## KAZAKHSTAN

A. Sukhenko  
Karaganda  
Kazakhstan  
tel. +7 7212 308238  
tel. +7 701 7133056  
tel. +7 700 4852175  
e-mail: kaldewei\_kz@mail.ru

## MIDDLE EAST

R. Kaakarli  
Am Pappelgraben 98  
49080 Osnabrück  
Germany  
tel. +49 541 2028610  
fax +49 541 2028611  
e-mail: rami@kaakarli.de

## NETHERLANDS

Tim Langner  
P. O. Box 500330  
Dubai Internet City  
United Arab Emirates  
tel. +971 50 3979668  
fax +971 4 3908610  
e-mail: tim.langner@kaldewei.de

## NETHERLANDS

Plieger B.V.  
Koxkampseweg 6  
5301 KK Zaltbommel  
Netherlands  
tel. +31 418 682 682  
fax +31 418 680 143  
e-mail: post@plieger.nl

## NEW ZEALAND

Metrix  
62 Apollo Dr, Mairangi Bay  
P. O. Box 100-840  
NSMC, Auckland  
New Zealand  
tel. +64 944 5656  
fax +64 944 5151  
e-mail: info@metrix.co.nz

## Hydrotech Sanitär

42 Lunn Avenue, Mt Wellington  
P. O. Box 14199, Auckland  
New Zealand  
tel. +64 9527 2276  
fax +64 9527 1809  
e-mail: info@hydrotech.co.nz

## NORWAY

Holtan Trading AS  
Finstadhagen PB 24  
1930 Aurskog  
Norway  
tel. +47 63853830  
fax +47 63853831  
e-mail: post@holtans.no

## POLAND

Kaldewei Polska Spółka z o.o.  
ul. Slowikowskiego 1a  
05-090 Raszyn  
Poland  
tel. +48 22 720 16 03  
fax +48 22 720 16 05  
e-mail: poczta@kaldewei.pl

## ROMANIA

EU RO International  
B-dul Dinicu Golescu  
nr. 41, sc. 3, ap. 67  
Bucharest (Sector 1)  
Romania  
tel. +40 21 3161451  
fax +40 21 3161452  
e-mail: office@eurointl.ro

## RUSSIA

V. Shmalts  
Moscow  
Russia  
tel. +7 495 5072872  
fax +7 495 9966753  
e-mail: ru@kaldewei.ru

## SLOVAKIA

Kaldewei CS, s.r.o.  
Ohradní 61a  
140 00 Praha 4  
Czech Republic  
tel. +420 241 092 150  
fax +420 241 092 160  
e-mail: info@kaldewei.cz

## SOUTH AFRICA

House of Style  
21 Natal Street  
Parden Island  
7405 Cape Town  
tel. +27 21 506 4506  
fax +27 21 506 4559  
e-mail: kaldewei@yelloimport.com

## SOUTH EAST ASIA

Kaldewei South East Asia Pte. Ltd.  
61, Bukit Batok Crescent  
#02-05 Heng Loong Building  
Singapore 658078  
Singapore  
tel. +65 6889 2487  
fax +65 6889 2487  
e-mail: kaldewei-sg@hotmail.com

## SOUTH KOREA

Hyunwoo Trading Co., Ltd.  
213-5 Nonhyun-dong, Gangnam-gu  
Seoul 135-010  
Korea  
tel. +82 2 547 3522  
fax +82 2 547 3589  
e-mail: hyunwookr@hotmail.com

## SPAIN

Kaldewei España, S.L.  
C/Salvador Espriu 59, 4º-1ª  
08005 Barcelona  
Spain  
tel. +34 93 224 1150  
fax +34 93 221 7444  
e-mail: info@kaldewei.es

## SWEDEN

Langenfeld Bad AB  
Södra Kungsvägen 57  
181 32 Lidingö  
Sweden  
tel. +46 8 7020775  
fax +46 8 7021775  
e-mail: info@langenfeld.se

## SWITZERLAND

Zentrallager Schweiz  
Obere Dünnerstr. 24  
4612 Wangen b. Olten  
Switzerland  
tel. +41 62 2052100  
fax +41 62 2121654  
e-mail: lager-wangen@kaldewei.de

## TURKEY

M. Kahraman  
Istanbul  
Turkey  
tel. +90 533 5996085  
fax +90 212 2312097  
e-mail: mustafa.kahraman@kaldewei.de

## UKRAINE

B. Byshovets  
Kiev  
Ukraine  
tel. +380 50 3104265  
e-mail: kaldewei@ua.fm

## UNITED KINGDOM

Kaldewei UK Ltd.  
Unit 2, Jupiter Court  
Tolworth Rise South  
Surbiton  
Surrey, KT5 9NN  
United Kingdom  
tel. +44 208 337 1441  
fax +44 208 337 1998  
e-mail: info@kaldewei-uk.com

## UNITED STATES/ CANADA/MEXICO/ CARIBBEAN

Kaldewei USA Inc.  
510 Broadhollow Road  
Suite 209  
Melville, NY 11747  
United States  
tel. +1 631 501 1053  
fax +1 631 501 1060